

# Be Thou My Vision

for SATB choir, oboe, organ  
and congregation

Irish 8<sup>th</sup>-10<sup>th</sup> cent.  
trans. Mary E. Byrne, 1880-1931  
vers. Eleanor H. Hull, 1860-1935, alt.

Slane  
Irish folk tune  
Setting by Paul Bouman

## Introduction: Oboe and Organ

Musical notation for the introduction of the Oboe and Organ. The Oboe part is written on a single staff in G-flat major (two flats) and 3/4 time. The Organ part is written on a grand staff (treble and bass clefs) in the same key and time. The organ part includes a 'man.' (manual) marking and features arpeggiated chords and flowing sixteenth-note patterns.

Musical notation for the first system of the choir and organ. The Oboe part continues with a 'rit.' (ritardando) marking. The organ part also includes a 'rit.' marking and a 'ped.' (pedal) marking. The organ accompaniment consists of block chords and simple harmonic lines.

## St. 1: Choir, Congregation and Organ

Musical notation for the first system of the choir and organ with lyrics. The Oboe part has the lyrics: "Be thou my vi-sion, O Lord of my heart". The organ part includes a 'ped.' (pedal) marking. The organ accompaniment consists of block chords and simple harmonic lines.

naught be all else to me, save that thou art:

thou my best thought by day and by night

wak-ing or sleep-ing, thy pres-ence my light.

*mar.*

st. 2: choir, oboe and organ

Be thou my wis-dom, and  
Be thou my

mp  
ped.

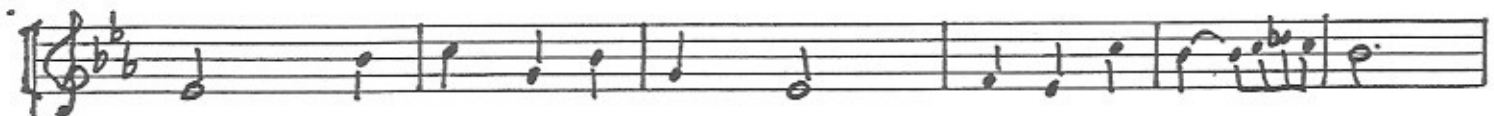
thou my true word; I ev-er with thee and  
wis-dom, and thou my true word; I ev-er

man.



thou with me, Lord. Thou my soul's shel- ter, thou my high

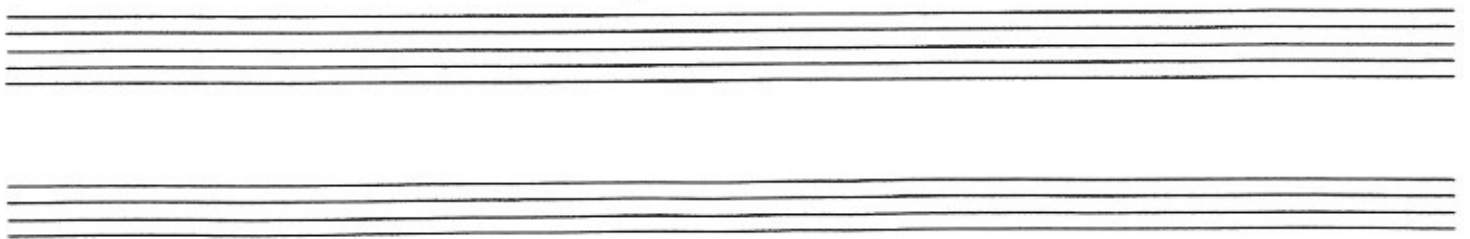
with thee and thou with me, Lord. Thou my soul's shel- ter,



tower, raisethou me heav'n-ward, O Pow'r of my pow'r.

thou my high tower, raise thou me heav'n-ward, O Pow'r of my pow'r.

ped. p.



# St. 3: Choir, Congregation and Organ

Rich-es I heed not, nor vain emp-ty praise, thou mine in-

*mf*  
*ped.*

Detailed description: This system contains the first two staves of music. The top staff is a vocal line in G major (one flat) with a 4/4 time signature. The lyrics are "Rich-es I heed not, nor vain emp-ty praise, thou mine in-". The bottom two staves are piano accompaniment. The right hand plays chords and moving lines, while the left hand plays a steady bass line. Dynamics include *mf* and *ped.*

her-i-tance, now and al-ways: thou, and thou on-ly,

Detailed description: This system contains the next two staves of music. The vocal line continues with the lyrics "her-i-tance, now and al-ways: thou, and thou on-ly,". The piano accompaniment continues with similar harmonic support. The right hand features some sixteenth-note patterns.

first in my heart, great God of heav-en, my trea-sure thou

Detailed description: This system contains the final two staves of the vocal and piano parts. The vocal line concludes with the lyrics "first in my heart, great God of heav-en, my trea-sure thou". The piano accompaniment provides a final harmonic resolution.

Oboe

*art.*

*ped.*

Detailed description: This system contains two staves. The top staff is for the Oboe, starting with a rest and then playing a melodic line. The bottom two staves are for the piano accompaniment, continuing from the previous system. Dynamics include *art.* and *ped.*

St. 4: Choir, Oboe and Organ

S  
A

T  
B

mp.

1 May I reach heav-en's joys, O heav-en's Sun!

mp.

Heart of my

Oboe

Soprano

Tenor

own heart, what-  
ev-er, be-  
fall, Still be my Vi-  
sion, O

ped.

Ru-ler of all.

pp

pp