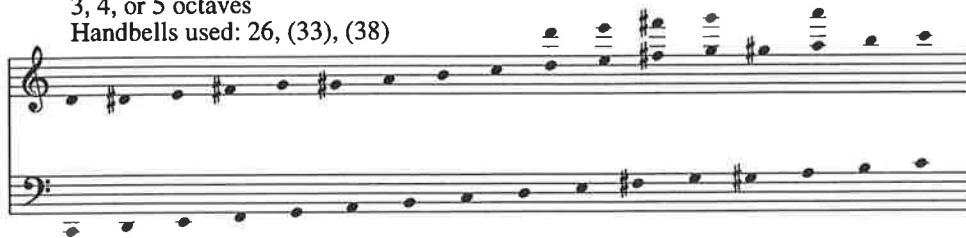


Let Us Sing with Heart and Voice *Who Are These That Earnest Knock*

SATB, 3-5 Octave Handbells, Keyboard

Level II
3, 4, or 5 octaves
Handbells used: 26, (33), (38)



JAN TABORSKY, d. 1495, tr. JAROSLAV J. VAJDA
HENRY LETTERMANN

WALTER L. PELZ
Handbell part by JOHN A. BEHNKE
(ASCAP)

Moderato, $\text{♩} = c. 102$

Handbells

mp

1 2 3 4

TD R TD R

TD TD Pl R

Key-board

Text translation copyright © 1989 Jaroslav J. Vajda. All rights reserved. Used by permission.
Text copyright © 1962 Henry Lettermann. All rights reserved. Used by permission.

Separate Handbell part available; Order No. 97-6747

Copying or reproducing this material in any form is illegal.

Copyright © 1998 Concordia Publishing House
3558 S. Jefferson Avenue, St. Louis, MO 63118-3968
All Rights Reserved. Printed in U.S.A.

98-3447

5 6 7

mf

Women *p*

Let us sing with heart and voice Praise to our Cre -
 Who are these that ear - nest knock, Seek - ing some safe—

5

8 9 10

TD R
 Pl R

a - tor, Who to_ make the world re - joice
 ha - ven, These in_ lone - ly streets that walk,

8

11 12 13

Sent its Lib - er - a - tor.
Weak and heav - y la - den?

From a vir - gin
Jo - seph and the

14 15 16

came— a child To a world by sin de - filed
vir - gin mild, Seek - ing shel - ter for the Child

14

17 18 19

Ev - 'ry proph - e -
Let me read - y

Born to be our Sav - ior;
Yet un - born but near. _____

17

20 21 22

cy ful - filled, Died as God his Fa - ther willed,
room for him, I will take the Christ Child in,

20

23 24 25

mp

This system contains the first three measures of the score. Measure 23 is in 4/4 time, measure 24 is in 2/4 time, and measure 25 is in 4/4 time. The music consists of chords in the right hand and rests in the left hand. A dynamic marking of *mp* is present in measure 25.

Earn - ing us his fa vor.
Hum - bly pay him wel - come.

This system contains the vocal line for measures 23-25. The lyrics are: "Earn - ing us his fa vor. Hum - bly pay him wel - come." The melody is in the treble clef, and the bass line is in the bass clef. The time signatures are 4/4, 2/4, and 4/4.

23

This system contains the piano accompaniment for measures 23-25. Measure 23 has a circled number 23 above the treble clef. The piano part features a melodic line in the treble clef and chords in the bass clef. The time signatures are 4/4, 2/4, and 4/4.

26 27 28

TD *R* *TD* *R*

PI *R*

This system contains the first three measures of the second system. Measure 26 is in 4/4 time, measure 27 is in 4/4 time, and measure 28 is in 4/4 time. The music consists of chords in the right hand and rests in the left hand. Dynamic markings *TD* and *R* are present in measures 26, 27, and 28.

This system contains empty staves for the vocal line and piano accompaniment for measures 26-28.

26

This system contains the piano accompaniment for measures 26-28. Measure 26 has a circled number 26 above the treble clef. The piano part features a melodic line in the treble clef and chords in the bass clef. The time signatures are 4/4, 4/4, and 4/4.

29 30 31

mf

Who had ev - er heard such news, That the Lord of—
 Who is this that doc - ile lies In a low - ly—

Who had ev - er heard such news, That the
 Who is this that doc - ile lies In a

32 33 34

an - gels And the— king of heav'n would choose
 cra - dle? Who is— this that dig - ni - fies

Lord of— an - gels, And the— King of heav'n would
 low - ly— cra - dle? Who is— this that dig - ni -

29 32

35 36 37

mp

Such a way to save us? Yet by such a
 This rude com - mon sta - ble? Christ, the ev - er -

choose Such to save us?
 fies This rude sta - ble?

35

38 39 40

TD R TD R
 Pl R

birth as this Christ would gain and seal the bliss
 liv - ing Lord, By the an - gel hosts a - dored,

38

41 42 43

Of the hope - less crea - ture.
Come to meet his death.

41

44 45 46

f *pp*

E - ven an - gels wond - 'ring long, Make this theme their
O Re - deem - er of my sin, Oh, how great thy

44

47 48 49

Christ - mas song: love has been, God in hu - man
To be born to na save

50 51 52

mp

ture!
me!

53 54 55

TD R f

PI R

What a - maz - ing love and grace
Who are these that si - lent stand,

(53)

56 57 58

Peace be - yond all know - ing That the Lord of
Filled with ho - ly won - der? Pros - e - lyte and

(56)

59 60 61

time and space Lies where cows are low - ing!
 pil - grim band, Thou - sands with - out num - ber,

59

62 63 64

mf

Shall the an - gels on - ly sing Prais - es to the
 Shep - herds, sag - es, saints whose eyes See the new - born

62

65 66 67

new - born King Sleep - ing in the man - ger?
sac - ri - fice With dis - cern - ing faith.

65

68 69 70

Great the Shep - herd come to keep me
All un - wor - thy, yet make me

68

71 72 73

All the pre - cious lambs and sheep safe from mor - tal
One who sees his maj - es - ty, one who kneels a -

74 75 76 77

mp *TD* *R* *p* *pp*
PI

dan ger. / dor ing.

dan ger. / dor ing.

74

rit. *pp*