

Good Christian Men, Rejoice

Walter L. Pelz

With lilting ease (♩. = c. 60-63)

S. *mf*
1. Good

A. *mf*
1. Good

T. *mf*
1. Good

B. *mf*
1. Good

Organ *mf*

Chris-tian men, re-joice, With heart, and soul, and voice;

christ-ian men, re-joice — With heart, and soul, and voice;

Detailed description: This system contains four staves. The top two staves are vocal lines in G major (one sharp) and 4/4 time. The first staff has lyrics 'Chris-tian men, re-joice, With heart, and soul, and voice;'. The second staff has lyrics 'christ-ian men, re-joice — With heart, and soul, and voice;'. The bottom two staves are piano accompaniment, with the right hand playing a simple harmonic accompaniment and the left hand playing a bass line.

Detailed description: This system shows the piano accompaniment for the first system, consisting of two staves (treble and bass clef). The right hand has a few notes in the first measure, followed by rests. The left hand has a few notes in the first measure, followed by rests.

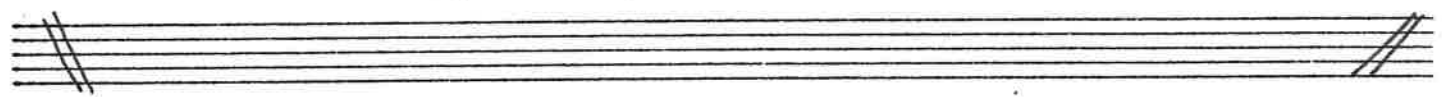
Give ye heed to what we say: Je-sus Christ is born to-day;

Give ye heed to what we say: Je-sus Christ is born to-day;

Detailed description: This system contains four staves. The top two staves are vocal lines in G major and 4/4 time. The first staff has lyrics 'Give ye heed to what we say: Je-sus Christ is born to-day;'. The second staff has lyrics 'Give ye heed to what we say: Je-sus Christ is born to-day;'. The bottom two staves are piano accompaniment, with the right hand playing a simple harmonic accompaniment and the left hand playing a bass line.

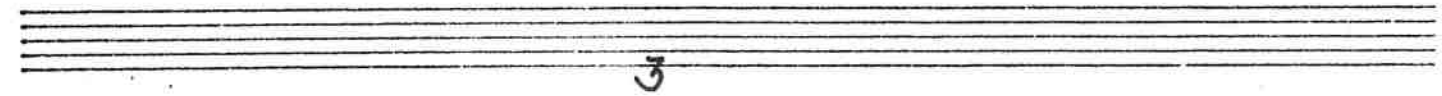
Ox and ass be - fore him bow, And he is in the

Ox and ass. be - fore him bow, And he is in the



man-ger now. Christ is born to-day! Christ is born to-

man-ger now. Christ is born to-day! Christ is born to-



Bells

mf

S. A. *(S.A. unis.) mf*

day!

T. B.

2. Good

Organ

mf
(Bright registration)

Chris-tian men, re-joice, — with heart, and soul, and voice;

S. A. *mp* Now ye hear of end-less bliss: Je - sus Christ was born for this!

Organ (contrasting registration)

Bells

S. A. He hath ope'd the heavenly door, And man is bless-ed ev - er - more.

T. B.

Organ

Christ was born for this! Christ was born for this!

Bells

Descant

S.
A.

3. Good Chris-tian men, re-

T.
B.

3. Good Chris-tian men, re-

Organ

Bells



Descant

S. A. T. B.

oice, With heart, and soul and voice; Now ye need not

oice, with heart, and soul and voice; Now ye need not



Organ



A single musical staff in treble clef with a key signature of one flat (Bb). It contains several measures of music, including quarter notes, eighth notes, and rests.

Two vocal staves with lyrics. The lyrics are: "fear the grave: Je - sus Christ was born to save! Calls you one and". The music is in treble clef with a key signature of one flat. The lyrics are written below the notes.

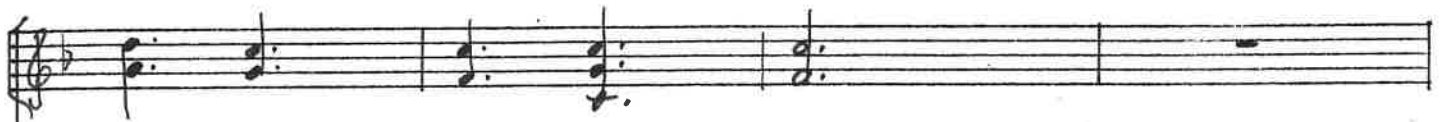
Two vocal staves with lyrics. The lyrics are: "fear the grave: Je - sus Christ was born to save! Calls you one and". The music is in treble clef with a key signature of one flat. The lyrics are written below the notes.

A single musical staff in bass clef with a key signature of one flat. It contains several measures of music, including quarter notes, eighth notes, and rests.

7 as is

calls you all to gain his ev-er last-ing hall. Christ was

calls you all to gain his ev-er last-ing hall. Christ was born fo-



senza rit.
born to save! — Christ was born to save!
senza rit.
save! — Christ was born to save!

Two vocal staves in G major. The first staff has lyrics "born to save! — Christ was born to save!" and the second staff has "save! — Christ was born to save!". Both staves are marked "senza rit.". The musical notation includes notes, rests, and a fermata over the first measure of each line.

senza rit.
(solo)

Piano accompaniment staves in G major. The upper staff has a melodic line with notes and rests, and the lower staff has a bass line. The music is marked "senza rit." and includes a "(solo)" marking in the final measure.

mp

mp Christ was born to

poco a poco cresc. *f*

save!

cresc. *f*

Christ was born to save!

slowing

f *molto cresc.*

Bells

(delicately)

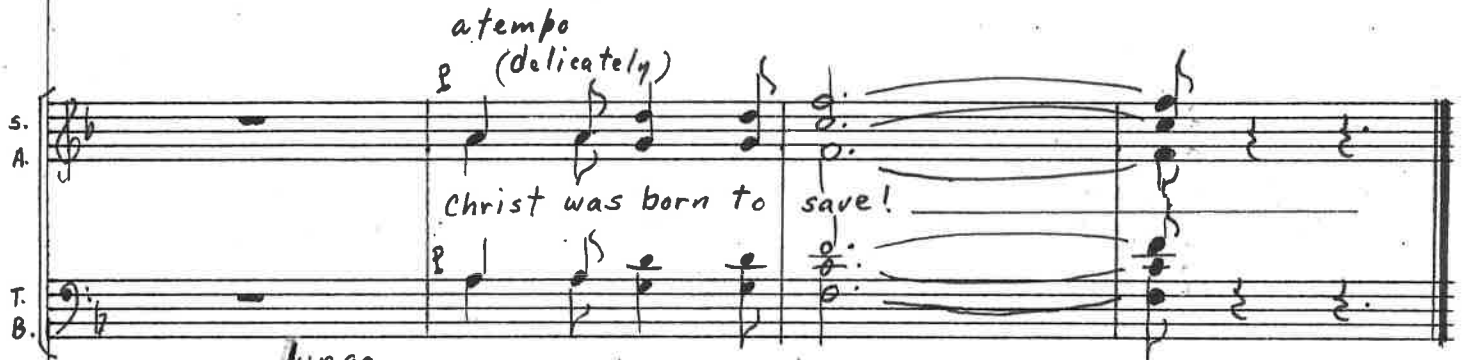


S.
A.

atempo
p (delicately)

Christ was born to save!

T.
B.



Organ

lunga

sffz

a tempo
p (delicately)

