

Angels We Have Heard

Walter L. Pelz

Buoyantly (♩ = c. 104)

S.
A.

T.
B.

Organ

f nonlegato

Ped.

f

1. An-gels we have heard on high, Sweet-ly sing-ing o'er the plains.

Copyright © Walter L. Pelz 1979

And the mount-ains in re-ply, Ech-o-ing their joy-ous strains.

This system contains two staves. The upper staff is a vocal line in treble clef with a key signature of one sharp (F#) and a 4/4 time signature. It contains four measures of music with lyrics: "And the mount-ains in re-ply, Ech-o-ing their joy-ous strains." The lower staff is a piano accompaniment in bass clef with the same key signature and time signature, providing harmonic support for the vocal line.

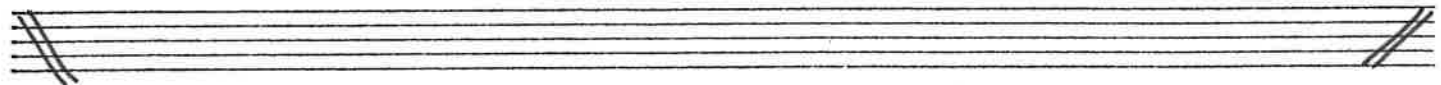
This system consists of two empty musical staves, one in treble clef and one in bass clef, both with a key signature of one sharp (F#). These staves are intended for piano accompaniment.

legato
Glo-ri-a

This system contains two staves. The upper staff is a vocal line in treble clef with a key signature of one sharp (F#) and a 4/4 time signature. It features a melodic line with a slur over the first three measures and the lyrics "Glo-ri-a". The lower staff is a piano accompaniment in bass clef with the same key signature and time signature, providing harmonic support.

This system consists of two empty musical staves, one in treble clef and one in bass clef, both with a key signature of one sharp (F#). These staves are intended for piano accompaniment.

S. *semi-detached*
A. *legato*
T. *Glo*
in ex-cel-sis De-o



ri-a in ex-cel-sis De-



S. - o.
T. B.

Organ



mf

2. Shep-herds why this ju-bi-lee? Why these songs of hap-py cheer

simile

mf

What great bright-ness did you see? What glad tid-ings did you hear?

What did you see?

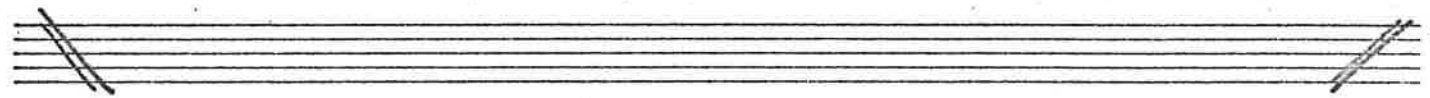
legato

* Bright registration

(unis) *legato*

Glo — ri — a

(unis)



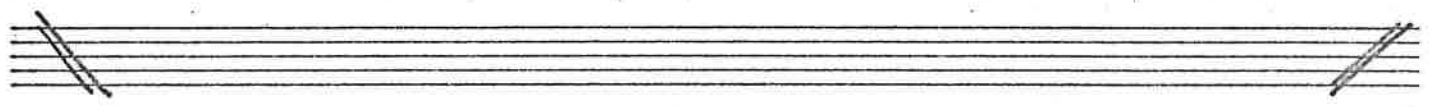
semi-detached *legato*

in ex-cel-sis De — o, Glo —

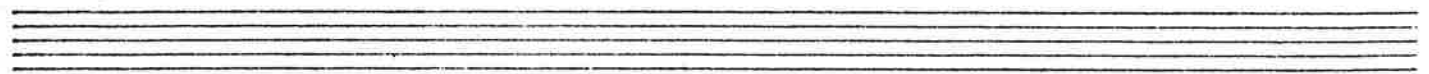
ri - a in ex - cel - sis De

decrescendo

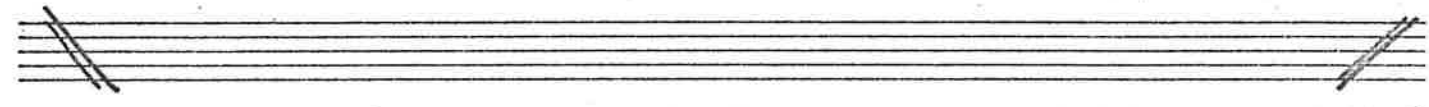
3. Come to Beth-le-hem and see Him whose birth the an-gels sing;



Come on bend-ed knee christ the new-born King.
 Come a-dore on bend-ed knee christ the lord the new-born King.
 Christ the new-born King.

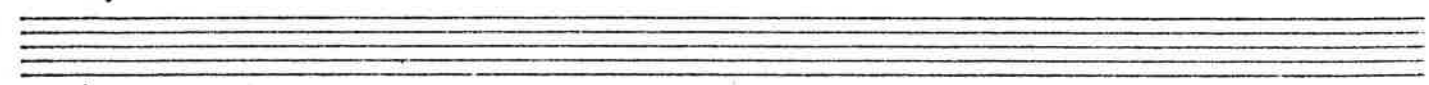


f
Glo — ri — a



in ex-cel-sis De-o
Glo-ri-a

f
(pizz.)



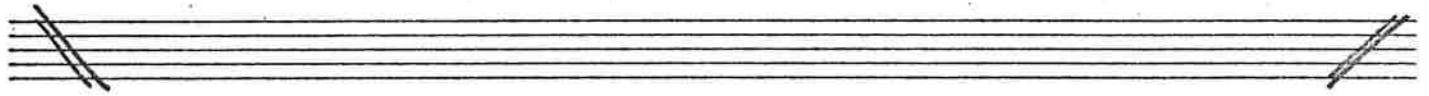
Glo-ri-a

ri - a in ex - cel - sis De

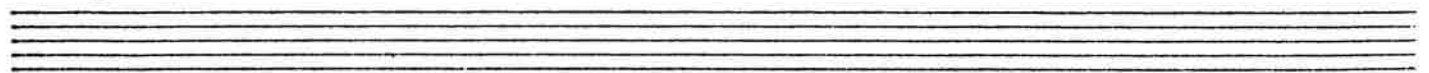
f (unis.)

4. See Him in a man-ger laid.

f (unis.)



Whom the an-gels praise a-bove Ma-ry, Jo-seph, lend your aid,



Glo

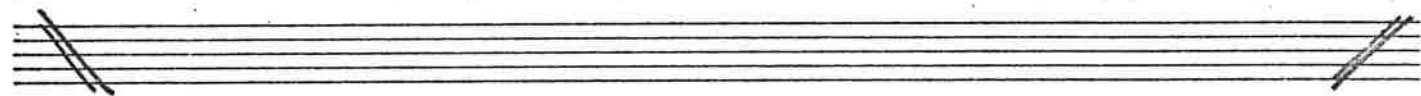
Glo

(unis)_a

While we raise our hearts in love.

Detailed description: This system contains the first two staves of music. The top staff is a vocal line in treble clef with a key signature of one sharp (F#). It begins with the lyrics 'While we raise our hearts in love.' and ends with a melodic phrase labeled 'Glo'. The bottom staff is a piano accompaniment in bass clef, starting with a key signature of one sharp. It features a steady eighth-note accompaniment in the left hand and chords in the right hand. A second vocal line, labeled 'Glo' and '(unis)_a', is written below the piano staff.

Detailed description: This system contains the piano accompaniment for the second system, consisting of two staves in treble and bass clefs. The music continues with the eighth-note accompaniment and chordal textures established in the first system.



ri - a

trisa

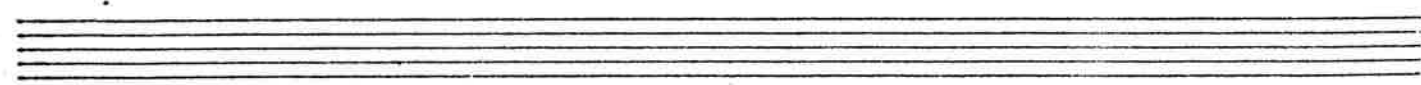
in ex-cel-sis De - o

cresc. s - - -

Detailed description: This system contains the third system of music. The top staff is a vocal line in treble clef with a key signature of one sharp. It features a melodic line with a slur over the notes 'ri - a' and 'trisa', followed by the lyrics 'in ex-cel-sis De - o'. The bottom staff is a piano accompaniment in bass clef. A dynamic marking 'cresc.' is present above the staff, followed by a dashed line. A second vocal line, labeled 'trisa', is written below the piano staff.

cresc.

Detailed description: This system contains the piano accompaniment for the third system, consisting of two staves in treble and bass clefs. The music continues with the accompaniment from the previous system, including the 'cresc.' marking.



ff *Glo*

Glo

* a few sop. & ten.

broadening
Glo - ri - a

ri - a

in ex - cel - sis De

broadening