

Commissioned for the Kansas City (A.G.O.) Chapter
Annual Guild Service

Sing, My Tongue, the Glorious Battle

Text: Venantius Honorius Fortunatus 530-609
Trans. John M. Neale 1818-1866 alt.

Tune: "Fortunatus Neul"

by: Carl Schalk

(Choir, Brass Quintet, Organ, Congregation)

Setting: Walter L. Pelz

Introduction: Brass & Organ

Maestoso (♩ = c. 69)

Musical score for the introduction, featuring Trombones (Tb I, II), Organ, and Bass. The tempo is Maestoso (♩ = c. 69). The key signature is one flat (B-flat), and the time signature is 4/4. The organ part is marked *mf*. The bass part features a steady eighth-note accompaniment. The trombone parts have rests for the first four measures, followed by a melodic line in the fifth measure marked *mf* and *a2*.

Musical score for the introduction, featuring Trumpets (Tpt I, II), Horns (Hrn), and Trombones (Tbn I, II). The tempo is Maestoso (♩ = c. 69). The key signature is one flat (B-flat), and the time signature is 4/4. The trumpets and horns parts have rests for the first four measures, followed by a melodic line in the fifth measure marked *mf*. The trombone parts have rests for the first four measures, followed by a melodic line in the fifth measure marked *mf*.

Musical score for the introduction, featuring Organ and Bass. The tempo is Maestoso (♩ = c. 69). The key signature is one flat (B-flat), and the time signature is 4/4. The organ part continues with chords and the bass part continues with its eighth-note accompaniment.

* in C

Copyright © Walter L. Pelz 1986

Handwritten musical score for Tpt. I & II, Hn., Tbn. I & II, and Organ. The score is in 4/4 time and features a key signature of one flat (Bb). The organ part includes a handwritten note "poco rit" in the right hand.

Stanza 1:- Congregation and Organ

Handwritten musical score for the first stanza, featuring a vocal line and organ accompaniment. The organ part includes a handwritten note "f".

1. Sing, my tongue, the glo-rious bat-tle; Sing the end-ing of the fray.

Now a - bove the cross, the tro-phy, Sound the loud tri - um-phant lay;

This system contains a vocal line and piano accompaniment. The vocal line is written in a treble clef with a key signature of one flat (Bb) and a 4/4 time signature. The lyrics are: "Now a - bove the cross, the tro-phy, Sound the loud tri - um-phant lay;". The piano accompaniment consists of two staves: the upper staff is in a treble clef and the lower staff is in a bass clef, both with a key signature of one flat. The music features a mix of eighth and quarter notes, with some chords in the piano part.

Tell how Christ, the world's re - deem - er, As a vic - tim won the day.

This system continues the vocal line and piano accompaniment. The vocal line lyrics are: "Tell how Christ, the world's re - deem - er, As a vic - tim won the day.". The piano accompaniment continues with similar rhythmic patterns and chordal structures as the first system.

Stanza 2: Congregation and Brass

(Women) 2. Tell how, when at length the full-ness of the ap-point-ed time was come (Men)

This system is divided into three parts: Trumpet (TPI), Horn (Hn), and Congregation. The Trumpet and Horn parts are written in a treble clef with a key signature of one flat and a 4/4 time signature. They feature a melodic line with a dynamic marking of *p* (piano). The Congregation part is written in a bass clef with a key signature of one flat and a 4/4 time signature. The lyrics for the congregation are: "2. Tell how, when at length the full-ness of the ap-point-ed time was come". A fermata is placed over the word "point-ed". At the bottom center of the page, there is a small number "3".

Tpt. II
 Hn.
 Tbn. I
 Cong. (Men)
 He, the Word, was born of wo-man, Left for us his Fa-ther's home,

Tpt. II
 Hn.
 Tbn. I
 Cong. (All)
 Blazed the path of true o-be-dience, Shone as light a-midst the gloom.

Stanza 3: Choir

S.
 A.
 T.
 B.
 3. Thus, with thir-ty years ac-com-plished, He went forth from Naz-a-reth,

Des-tined, ded-i - cat-ed, will-ing, Did his work and met his death;

mf (unis.)

Like a lamb he hum-bly yield-ed On the cross his dy-ing breath.

Poco a poco dim.

pp

pp

Poco a poco dim.

Stanza 4: Congregation in Canon

(Women) *mf*

4. Faith-ful cross, true sign of tri-umph, Be for all the no-blest tree;

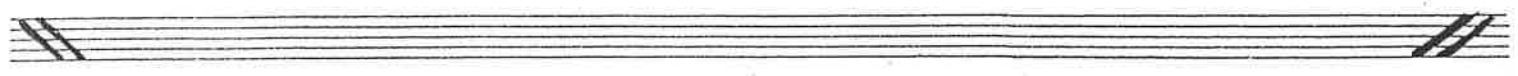
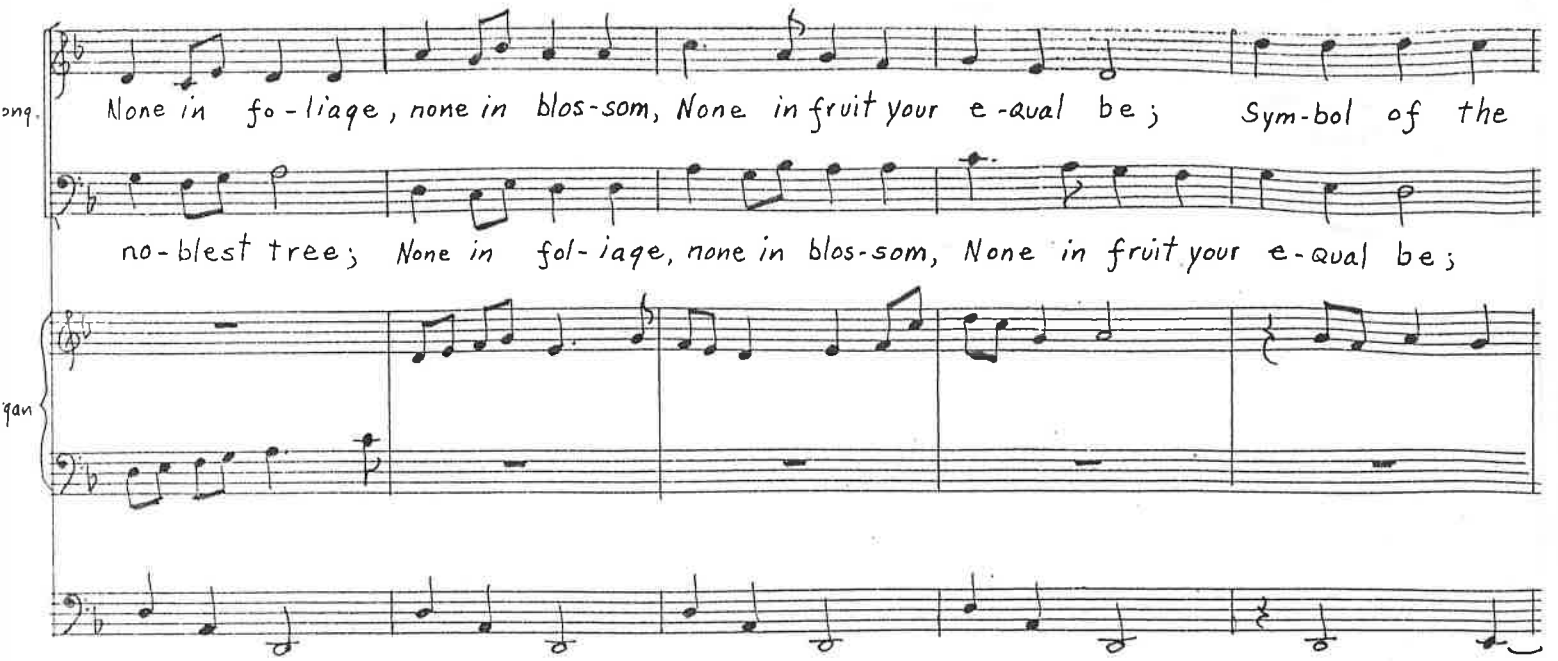
(Men) *mf*

4. Faith-ful cross, true sign of tri-umph, Be for all the

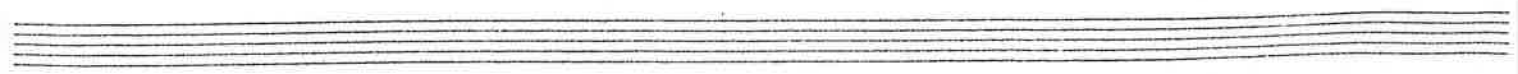
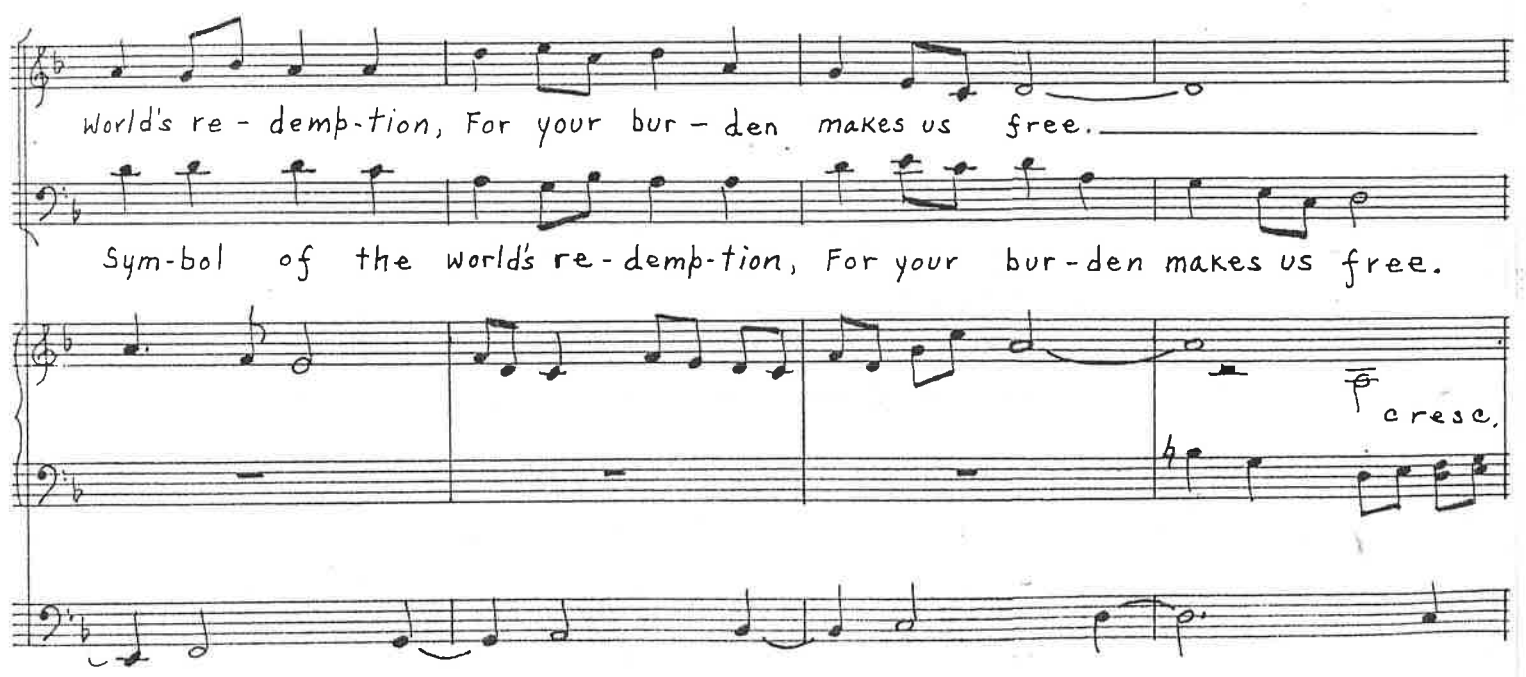
mf


Organo

None in fo-liage, none in blos-som, None in fruit your e-qual be; Sym-bol of the
no-blest tree; None in fol-iage, none in blos-som, None in fruit your e-qual be;



World's re-demp-tion, For your bur-den makes us free.
Sym-bol of the world's re-demp-tion, For your bur-den makes us free.



Fanfare: $\text{♩} \text{♩} \text{♩} \text{♩}$ Stanga 5: All forces 

7
Tpt. I
Tpt. II
Hr.
Tbn. I
Tbn. II
Organ

Handwritten musical score for the first system, featuring parts for Trumpets (Tpt.), Horns (Hn.), Trombones (Tbn.), Descant, Conga (Cong.), and Organ (Org.). The score is in 4/4 time and includes dynamic markings such as *rit.*, *a tempo*, and *ff*. The lyrics for this section are: "5. Un-to God be praise and glo-ry; To the Fa-ther and the Son,"

Handwritten musical score for the second system, featuring parts for Trumpets (Tpt.), Horns (Hn.), Trombones (Tbn.), and Organ (Org.). The score is in 4/4 time and includes dynamic markings such as *rit.* and *a tempo*. The lyrics for this section are: "To the e-ter-nal Spir-it hon-or Now and ev-er-more be done; Praise and glo-ry"

8

Handwritten musical score for a choir and orchestra. The score includes parts for Trumpet (Tb), Horn (Hn), Trombone (Tbn), Descant, Conga (Cong), and Organ (Org). The lyrics are "in the high-est, While the time-less a- ges run. A - men." The music is written in a key signature of one flat (Bb) and a common time signature (C). The organ part features a descending scale in the right hand and a bass line in the left hand. The conga part has a rhythmic accompaniment. The descant part is a melodic line. The brass parts (Tb, Hn, Tbn) provide harmonic support. The score ends with a double bar line and a fermata.

sdg