

Psalm 23

Commissioned by Grace Lutheran Church,
Glen Ellyn, Illinois, in memory of Art Staiger.

Walter L. Pelz

Tranquillo (♩ = cir. 63)

Flute

Organ

manualls only

Flute

Voices

Organ

(A few treble voices)

The Lord is my shep-herd:

Copyright © Walter L. Pelz 1983

Handwritten musical score for the first system. It consists of three staves: a vocal line at the top, a vocal line with lyrics in the middle, and a piano accompaniment at the bottom. The key signature has two sharps (F# and C#). The lyrics are "I shall not want. He".

I shall not want. He

Handwritten musical score for the second system. It consists of three staves: a vocal line at the top, a vocal line with lyrics in the middle, and a piano accompaniment at the bottom. The key signature has two sharps (F# and C#). The lyrics are "mak-eth me to lie down in green pas-tures: He".

mak-eth me to lie down in green pas-tures: He

lead-eth me be-side the still wa - ters.

lead-eth me be-side the still wa - ters.

lead-eth me be-side the still wa - ters.

(S.A.) mp

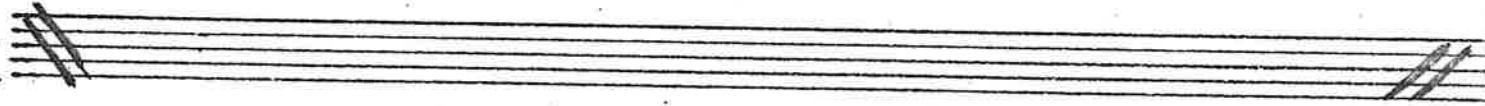
He re - stor - eth my soul :

(T.B.) mp

He lead - eth me in the paths of

Handwritten musical score for a vocal piece. The score consists of three staves: a vocal line, a piano accompaniment line, and a bass line. The key signature is one sharp (F#) and the time signature is 3/4. The lyrics are "right-eous-ness for his name's sake." The music features a mix of eighth and quarter notes, with some rests and dynamic markings like *p*.

Handwritten musical score for a piano accompaniment piece. It consists of two staves: a right-hand part and a left-hand part. The key signature is one sharp (F#) and the time signature is 3/4. The music features a mix of eighth and quarter notes, with some rests and dynamic markings like *p*.



Marche lugubrioso (♩ = cir. 60)

Handwritten musical score for a piano piece titled "Marche lugubrioso". The score consists of two staves: a right-hand part and a left-hand part. The key signature is one sharp (F#) and the time signature is 3/4. The music features a mix of eighth and quarter notes, with some rests and dynamic markings like *mf*.

mf *cresc.*

Yea, though I walk through the valley of the shadow of death,

mf *cresc.*

3

3

Detailed description: This system contains the first two staves of music. The top staff is a vocal line in treble clef with a key signature of one sharp (F#) and a 4/4 time signature. It begins with a mezzo-forte (mf) dynamic and a crescendo (cresc.) marking. The lyrics "Yea, though I walk through the valley of the shadow of death," are written below the notes. The bottom staff is a piano accompaniment in bass clef, also in 4/4 time, with a mezzo-forte (mf) dynamic and a crescendo (cresc.) marking. It features a triplet of eighth notes in the first measure and another triplet in the fourth measure.

cresc.

molto cresc.

Detailed description: This system contains the next two staves of music. The top staff continues the piano accompaniment in treble clef, with a crescendo (cresc.) marking. The bottom staff continues the piano accompaniment in bass clef, with a "molto cresc." (much more crescendo) marking. The music consists of chords and moving lines in both hands.

Detailed description: This system contains a single staff of music in bass clef, continuing the piano accompaniment. It features a series of eighth notes and rests.

Detailed description: Two empty musical staves, one in treble clef and one in bass clef, with a double bar line at the end of each.

Detailed description: Two empty musical staves, one in treble clef and one in bass clef, with a double bar line at the end of each.

Jubilantly (♩ = cir. 126)

ff

non legato

Detailed description: This system contains the next two staves of music. The top staff is a piano accompaniment in treble clef, marked "Jubilantly (♩ = cir. 126)" and "ff" (fortissimo). It includes a triplet of eighth notes. The bottom staff is a piano accompaniment in bass clef, marked "non legato". It features chords and moving lines.

Detailed description: This system contains a single staff of music in bass clef, continuing the piano accompaniment. It features eighth notes and rests.

6

Detailed description: Two empty musical staves, one in treble clef and one in bass clef, with a double bar line at the end of each. The number "6" is written below the staves.

f
I will fear no e-vil: → For

f *not ff*

thou art with me; →

legato

mf
Thy rod and thy staff they com - fori

mf

2

2

Detailed description: This system contains the first vocal line and piano accompaniment. The vocal line is in treble clef with a key signature of one sharp (F#) and a 4/4 time signature. It begins with a rest, followed by the lyrics "Thy rod and thy staff they com - fori". The piano accompaniment is in bass clef, starting with a whole note chord (F#2, C#3, G#3) and continuing with a steady accompaniment. There are two fermatas over the piano accompaniment in the second and third measures. Handwritten dynamics include "mf" above the vocal line and "mf" below the piano line. A "2" is written above the final vocal note, and another "2" is written below the piano accompaniment in the final measure.

Detailed description: This system contains the second vocal line and piano accompaniment. The vocal line is in treble clef and contains a melodic phrase with a fermata. The piano accompaniment is in bass clef and continues the accompaniment. There are two fermatas over the piano accompaniment in the second and third measures.

Detailed description: This system contains the third vocal line and piano accompaniment. The vocal line is in treble clef and contains a melodic phrase with a fermata. The piano accompaniment is in bass clef and continues the accompaniment. There are two fermatas over the piano accompaniment in the second and third measures.

mf
Poco rit.
me.

Detailed description: This system contains the fourth vocal line and piano accompaniment. The vocal line is in treble clef and contains the lyrics "me.". The piano accompaniment is in bass clef and continues the accompaniment. There are two fermatas over the piano accompaniment in the second and third measures. Handwritten dynamics include "mf" below the vocal line and "Poco rit." below the piano line.

mf
Poco rit.

Detailed description: This system contains the fifth vocal line and piano accompaniment. The vocal line is in treble clef and contains a melodic phrase with a fermata. The piano accompaniment is in bass clef and continues the accompaniment. There are two fermatas over the piano accompaniment in the second and third measures. Handwritten dynamics include "mf" below the vocal line and "Poco rit." below the piano line.

8

Detailed description: This system contains the sixth vocal line and piano accompaniment. The vocal line is in treble clef and contains a melodic phrase with a fermata. The piano accompaniment is in bass clef and continues the accompaniment. There are two fermatas over the piano accompaniment in the second and third measures. The number "8" is written at the bottom center of the page.

Espressivo (♩ = cir. 56)

7

molto rit. *p*

p

Thou pre
p

Espressivo (♩ = cir. 56)

molto rit. *p*

be he be ho ba ba

par-est a ta-ble be-fore me in the pre-sence of mine

Poco rit.

mp a tempo

e - ne - mies :

Thou an - oint - est my head with

mp

poco rit.

oil; my cup run-neth o - ver.

mf

Maestoso

f

Sure-ly good-ness and mer-cy shall fol-low me

Maestoso

no breath

Poco accel. + cresc.

all the days of my life: and I will

And

Poco accel. + cresc.

f

allargando

dwel And I will I will dwell in the house of the

I will dwell

allargand

ff

ff

Lord for - ev - er.

ff

3

12

Musical notation for the first system, including vocal lines and piano accompaniment. The lyrics "And I will" are written under the vocal lines. The music is in 3/4 time and features a piano (*p*) dynamic.

Musical notation for the second system, including piano accompaniment. The tempo marking $(d = cir. 63)$ and the dynamic marking *mf* are present. The music is in 3/4 time.

Musical notation for the third system, including vocal lines and piano accompaniment. The lyrics "dwell in the house of the Lord for ever," are written under the vocal lines. The music is in 3/4 time and features a piano (*p*) dynamic with the instruction "gradually slowing".

Musical notation for the fourth system, including piano accompaniment. The music is in 3/4 time.

Handwritten musical score for voice and piano. The score is written in treble and bass clefs with a key signature of one sharp (F#) and a 4/4 time signature. The music features a vocal line and piano accompaniment. The vocal line includes lyrics: "for ev er." and "Perdendosi". The piano accompaniment includes dynamic markings such as *pp*, *ppp*, and *Perdendosi*. The score is divided into measures by vertical bar lines.