

Love Divine All Loves Excelling

For Ebenezer Lutheran Congregation

Milwaukee, Wisconsin
in recognition of its 100th anniversary

Concertata for SATB Choir, Congregation,
Oboe, Trumpet and Organ
Flute, cello

P.B.

Charles Wesley 1707-1789

Introduction: Organ, Oboe and Trumpet

HYFRYDOL
Rowland H. Prichard 1811-87
Setting by Paul Bouman

Hymn Tempo

mf

Cello

mp

Flute

mp

Organ

p

X Stanza I: Soloist

1. Love di-vine, all loves ex-cel-ling, Joy of heav'n, To earth come
 Fix in us thy hum-ble dwell-ing, All thy faith-ful mer-cies

down! crown. de-sus, thou art all com-pas-sion, Pure, un-bound-ed

love thou art; Vis-it us with thy sal-va-tion,

En-ter ev'-ry trem-bling heart.

Stanza 2: flute, congregation, and organ

Voices

Organ

Breathe, oh, breathe thy lov- ing Spir- it In- to ev- 'ry
 Let us all in thee in- her- its; Let us find thy

trou- bled breast; Take a- way the love of sin- ning Al- pha
 prom- ised rest;

and O- me- ga be; End of faith, as its be-

ain-ing, Set our hearts at lib-er-ty.

Stanza 3: Choir (SATB, a cappella)

S
A
mp
3. Come, Al-might-y, to de-liv-er; Let us all thy life receive

T
B

Sud-den-ly re-turn, and nev-er, Nev-er-more thy

temples leave, Thee we would be al- ways bless- ing,

Serve thee as, thy hosts a- bove, Pray, and praise thee.

with- out ceas- ing Glo- ry in thy per- fect love.

Interlude

Handwritten musical notation for a piano interlude. It consists of two staves. The first staff is in treble clef with a key signature of two flats (Bb, Eb) and a time signature of 4/4. The second staff is in bass clef with the same key signature and time signature. The music begins with a mezzo-forte (mf) dynamic. After two measures, the key signature changes to one flat (Bb, Eb) and the time signature to 4/4. The second measure of this new section is marked with a crescendo hairpin. The piece concludes with a fermata over the final chord.

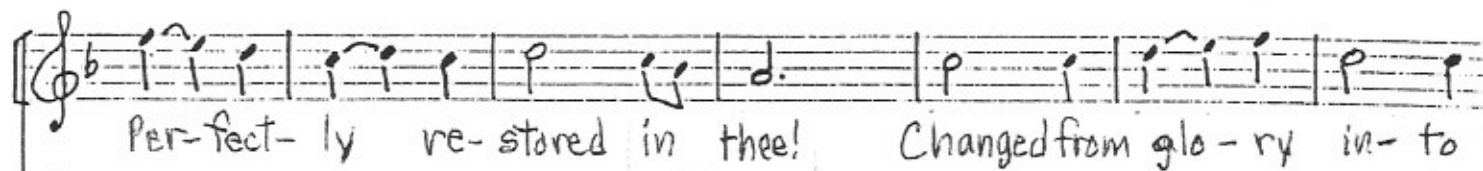
Handwritten musical notation for a piano interlude, continuing from the previous block. It consists of two staves in the same key signature and time signature. The music begins with a forte (f) dynamic and concludes with a fermata over the final chord.

Stanza 4: , Congregation, flute, cello and Organ

Handwritten musical notation for a vocal and organ accompaniment. It features three staves. The top staff is for the vocal line, starting with a rest followed by the lyrics "Fin- ish thy cre- a- tion Pure and spot- less". The middle staff is for the organ, starting with the lyrics "Fin- ish then thy new cre- a- tion, Pure and spot- less". The bottom staff is for the organ accompaniment. The key signature is two flats (Bb, Eb) and the time signature is 4/4. The organ part begins with a forte (f) dynamic. The organ accompaniment consists of chords and moving lines in both hands.

Handwritten musical notation for a vocal and organ accompaniment. It features three staves. The top staff is for the vocal line, starting with the lyrics "let us be; Let us see thy great sal- va- tion". The middle staff is for the organ, starting with the lyrics "let us be; Let us see thy great sal- va- tion". The bottom staff is for the organ accompaniment. The key signature is two flats (Bb, Eb) and the time signature is 4/4. The organ part begins with a piano (p) dynamic. The organ accompaniment consists of chords and moving lines in both hands.

flute



cello

